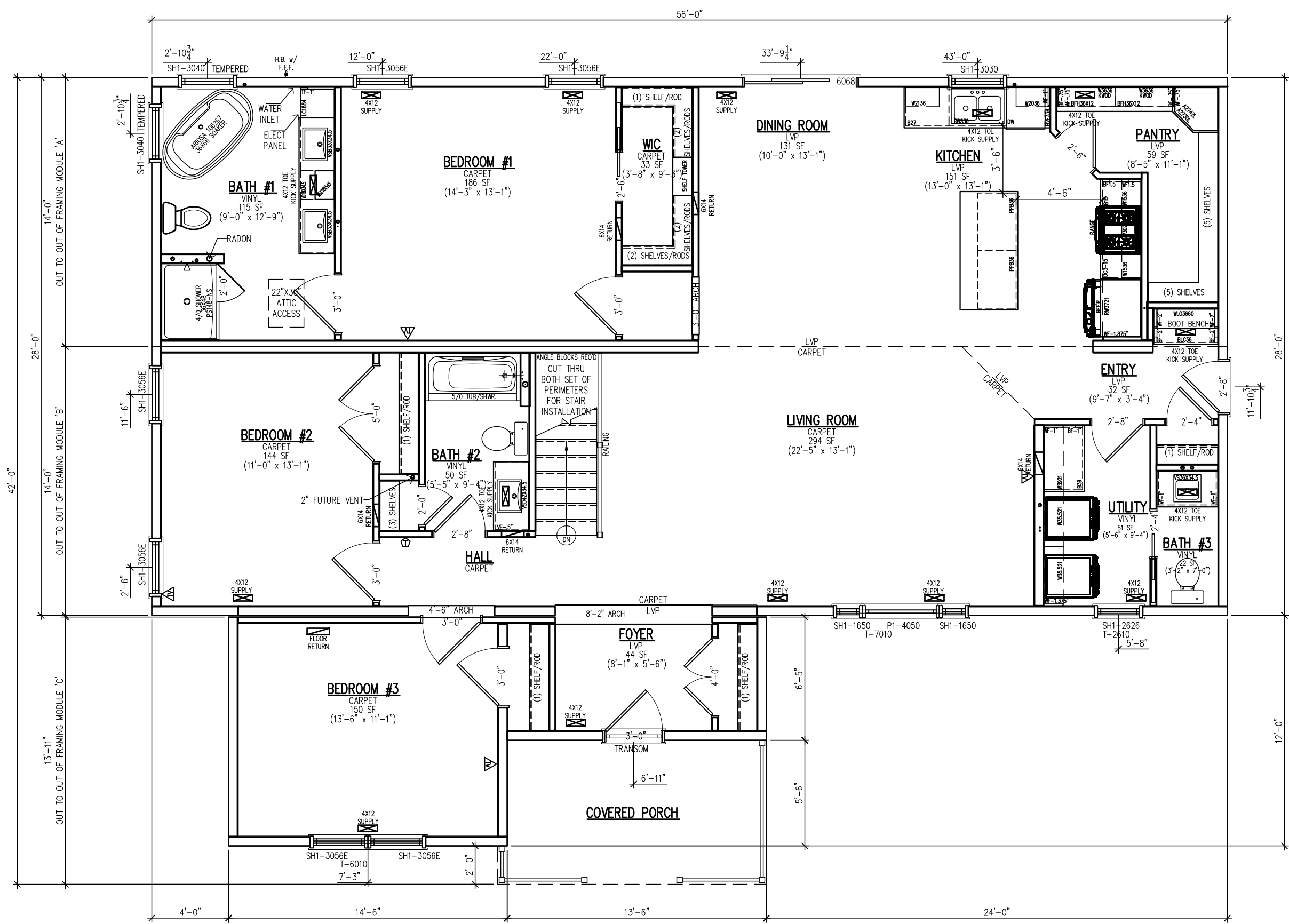


MINIMUM OF TWO (2) 20-AMP SMALL APPLIANCE BRANCH CIRCUITS SHALL BE INSTALLED TO SUPPLY RECEPTACLE OUTLETS IN KITCHEN COUNTER OUTLETS TO BE ON ALTERNATING 20 AMP CIRCUITS ALL SMOKE AND SMOKE/CARBON ALARMS ARE TO BE INTERCONNECTED SEAL CRANK SPACE ACCESS AND PROVIDE A GFI PROTECTED TYPE "B" LIGHT FIXTURE AND A GFI PROTECTED DUPLEX RECEPTACLE ATTIC ACCESS TO BE SEALED AND FACTORY TO INSTALL SWITCHED LUMINAIRE AND DUPLEX RECEPTACLE IN ATTIC AT OR NEAR VICINITY OF ACCESS MINIMUM 2 1/2" DIA. X 36" HIGH CLEARANCE REQUIRED AROUND RADON PIPE IN ATTIC PROPER AIR GAP CONNECTION REQUIRED TO THE DISHWASHER IN ACCORDANCE WITH 807.3 OF THE 2015 UPC & 414.3 OF THE 2015 MN PLUMBING CODE

EVERY CIRCUIT IN HABITABLE PORTIONS OF THE DWELLING MUST BE PROTECTED BY A COMBINATION TYPE AFCI DEVICES INCLUDING KITCHEN & LAUNDRY AREAS SERVICE PANEL - SIEMENS LOADCENTER 200 AMP WITH (40) SPACES, NEMA 1, 120/240 VAC RECESSED LUMINAIRES SHALL BE SEALED WITH A GASKET OR CAULK BETWEEN CONDITIONED AND UNCONDITIONED SPACE - REF. 2015 IRC (R404.4.4). LED DOWN LIGHTS LOCATED IN NET LOCATIONS ARE TO BE RATED ACCORDINGLY BATH VENT/LIGHT COMBINATION UNIT - 2.5 SONES, 70 CFM/PCM WATER LINE ON-SITE BY OTHERS (ERASE IF BY NORTHSTAR)

GENERAL NOTES:  
WHOLE HOUSE AIR EXCHANGE MECH. SYSTEM TO BE INSTALLED ON-SITE.  
- SEE R303.1.2 MECHANICAL VENTILATION CLIMATE ZONE 7 - 0.35 U-FACTOR, R-50 CEILING, R-21 WALL BAITS CLASS 3 VAPOR RETARDANT USED (LATEX PRIMER) - SEE R702.7.2 MATERIAL VAPOR RETARDANT CLASS TRUSSES ARE DESIGNED AND SEALED FOR MINNESOTA ALL RECEPTACLES ARE TO BE TAMPER PROOF WASHER APPLIANCE RECEPTACLE MUST BE READILY ACCESSIBLE PLAN CAN BE MIRROR IMAGED

Northstar Systembuilt  
MN Plan Review Number: IBC 2201-0008  
Plan Number: NS2462ABC IA SD  
REVIEWED FOR COMPLIANCE WITH THE REGULATIONS OF THE CONSTRUCTION CODES AND LICENSING DIVISION AND THE DEPARTMENT OF LABOR AND INDUSTRY STATE OF MINNESOTA  
BY: [Signature] DATE: 02/10/2022  
ON SITE CONSTRUCTION IS SUBJECT TO LOCAL AUTHORITY



203 Industrial Drive  
Redwood Falls, MN  
Ph: (507) 644-6600  
Fx: (507) 644-6601

MAIN LEVEL FLOOR PLAN

NS2462	DEALER: IDA GROVE	PAGE:
DRAWN BY: MW	CUSTOMER: KENSINGTON MODEL	A1.1
DATE: 5/28/21	REV: C BY: ML	DATE: 12/13/21
SCALE: 3/16" = 1'-0"		